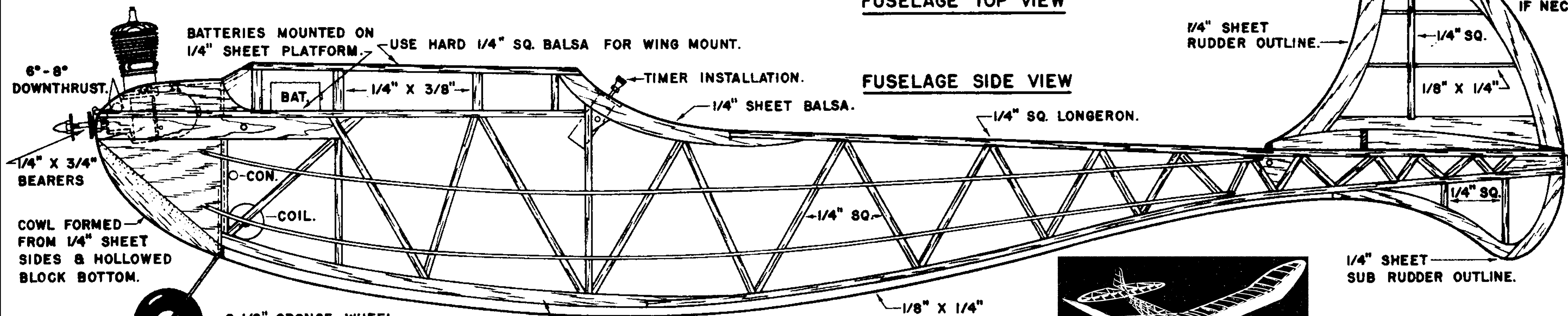
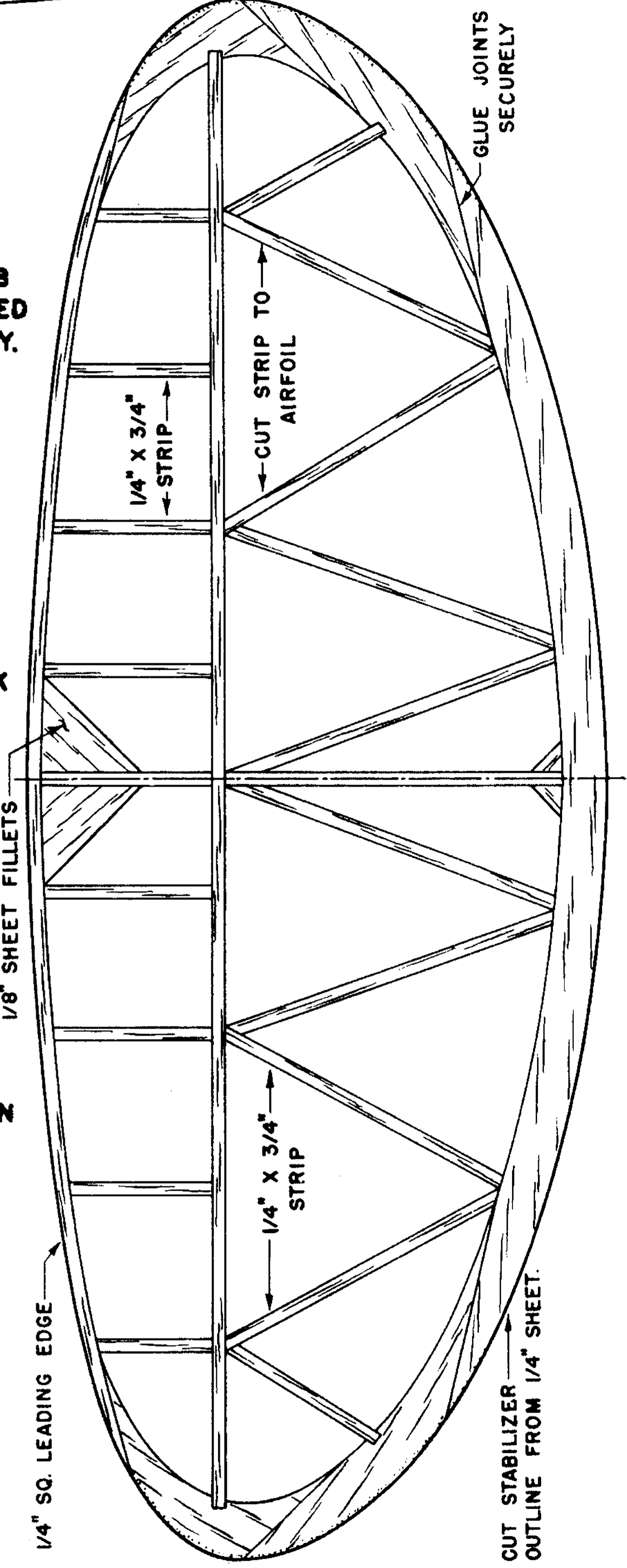
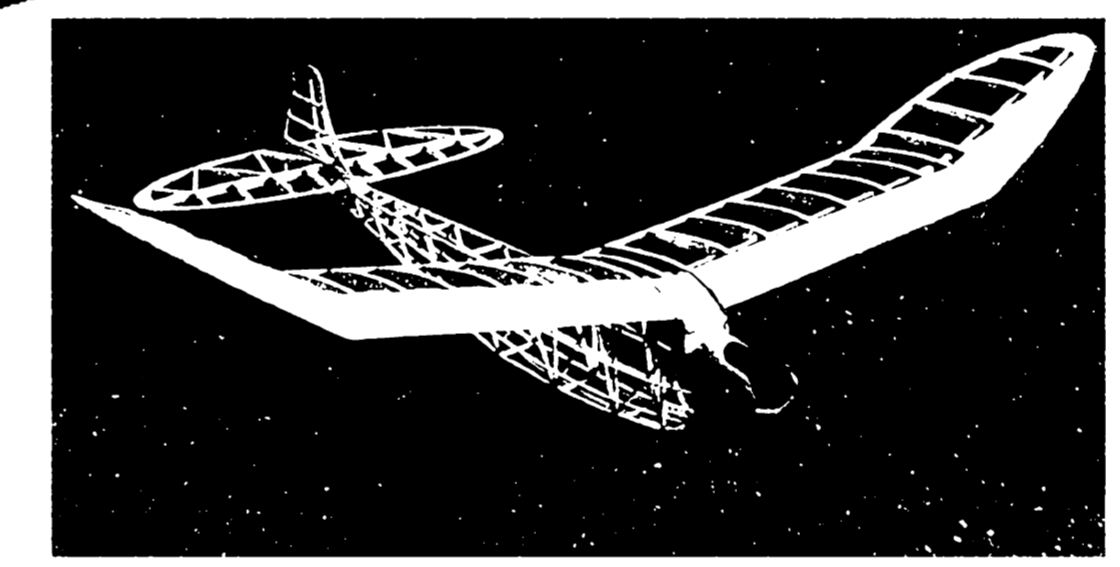


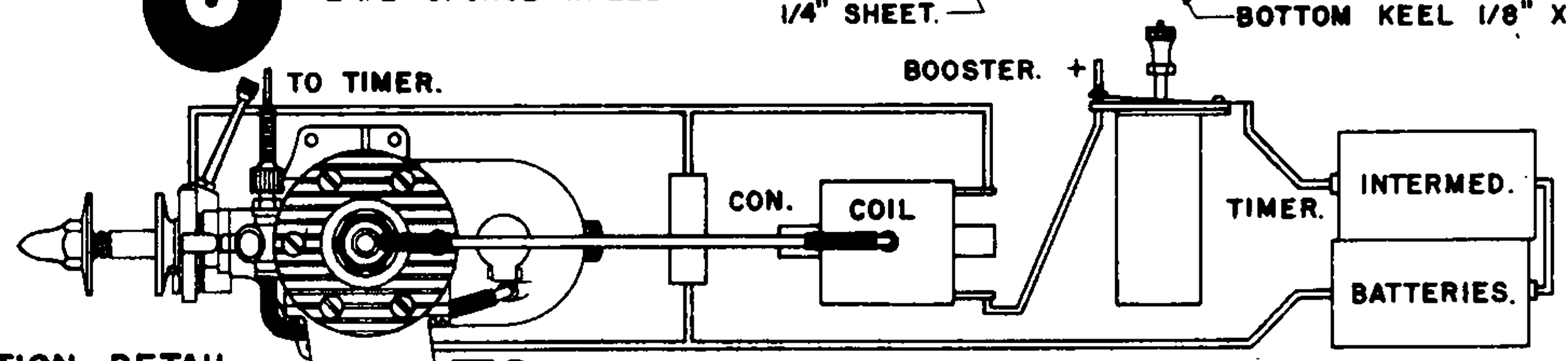
FUSELAGE TOP VIEW



FUSELAGE SIDE VIEW



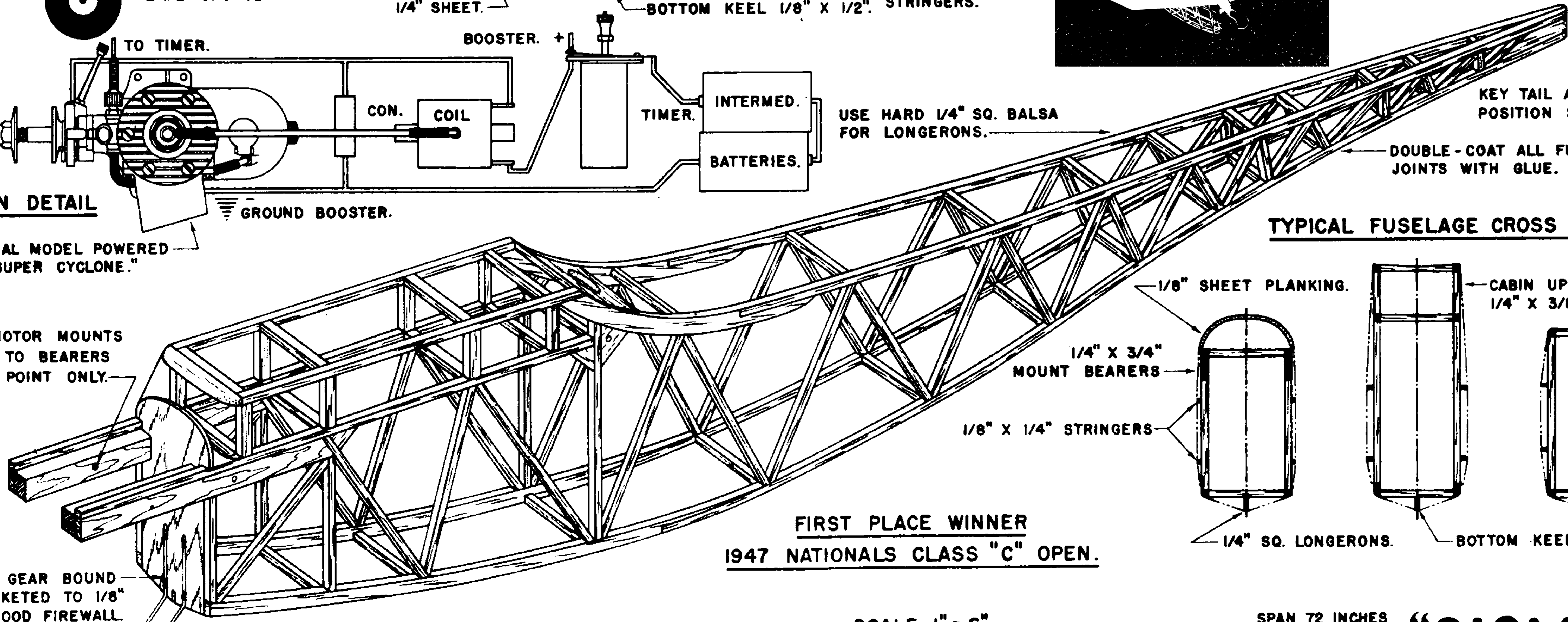
TYPICAL FUSELAGE CROSS SECTIONS



IGNITION DETAIL

ORIGINAL MODEL POWERED BY "SUPER CYCLONE."

NOTE: MOTOR MOUNTS BOLTED TO BEARERS AT ONE POINT ONLY.



FUSELAGE MAIN FRAME CONSTRUCTION

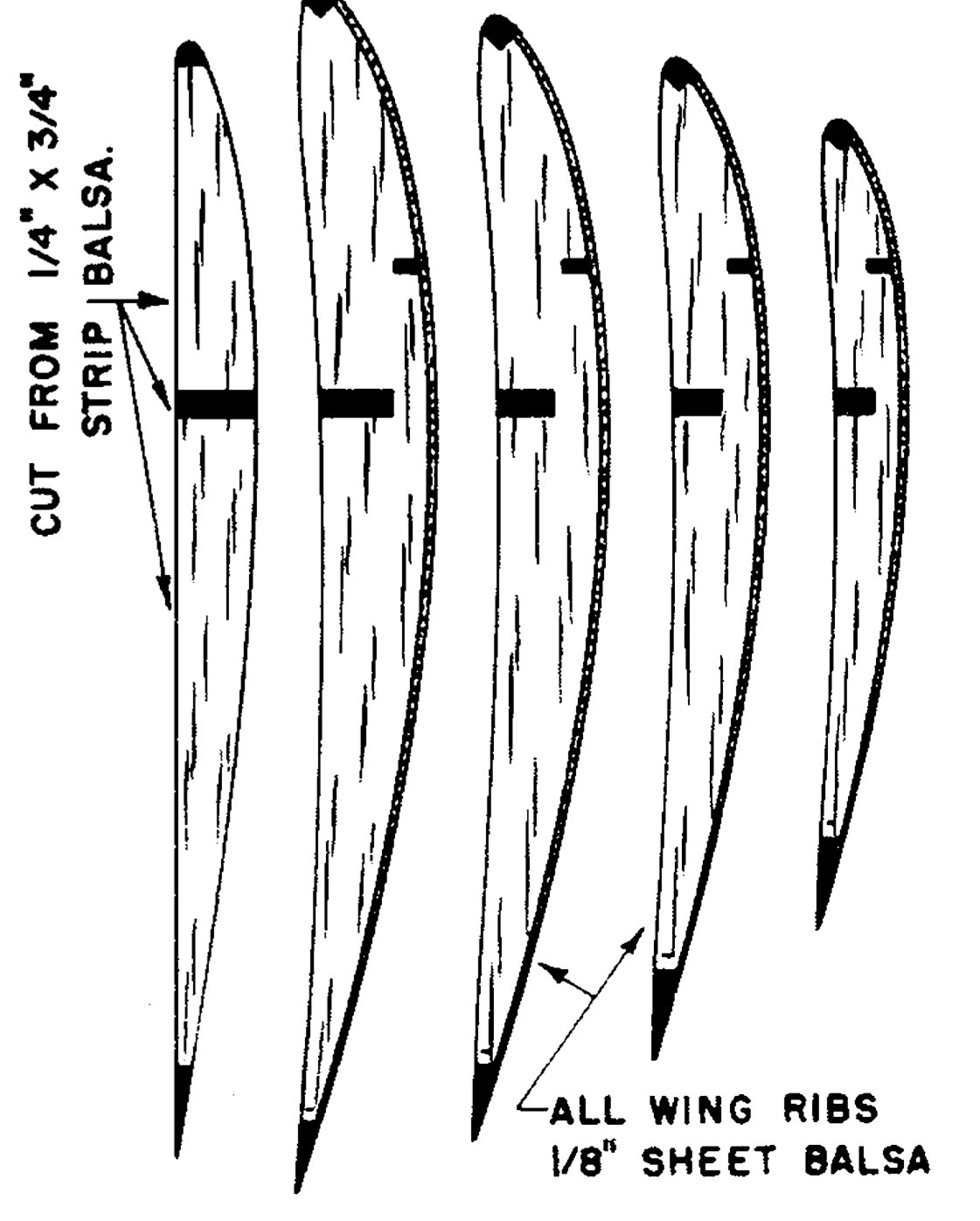
**FIRST PLACE WINNER
1947 NATIONALS CLASS "C" OPEN.**



NOTE: USE GRAPH SYSTEM TO ENLARGE PLAN. EACH SQUARE SHOULD BE ENLARGED TO 3/4\".

SPAN 72 INCHES
AREA 794 SQ."
CLASS C ENGINE
WEIGHT 56 OZ.

"GISMOE"
DESIGNED BY JERRY BROFMAN
DRAWN BY DON MCGOVERN



ALL WING RIBS 1/8\"/>